

CARGO HANDLING EQUIPMENT

3 – McGregor Hugglunds K-type Grab Crane K3028-4
SWL – with Grab 30 MT 7.5-28M
SWL – without Grab 32.5 MT 7.5-28M

4 – Grabs 'SMAG' type, capacity 19 MT copper concentrates.
4 – Pyloaders, Xuzhou ZL50E 5 MT Bucket.

MACHINERY

Main Engine : Mitsubishi M.A.N. 10V 52/55A
MCR 10550 BHP at 95 RPM
NCR 8965 BHP at 90 RPM
Boilers : Osaka Cylindrical Smoke Tube
10 kg/cm² x 5600 kg/hr.
Generators Ships Power : 2 x Yanmar D185L-ST x 500KVA
Generators for Cranes : 2 x Anqing Daihatsu PS26H x
960KVA
Propeller : One, fixed pitch five blade right
hand pitch 4.815m
Pumps Ballast : 2 x 1200 cub.m/hr.
Economiser exhaust Gas : 2400kg/hr.
Turbo Alternator : Shikokinzoku DNN3 x 550KVA

COMPLEMENT

Officers : 9
Crew : 23
Extra berths : 18
Total : 50

TANK CAPACITIES

Ballast : 23,316.4 cu.m.

Fuel Oil : 2,107 cu.m. (96%)
Diesel Oil : 134 cu.m. (96%)
Fresh Water : 419 cu.m.
Dist. Water : 313 cu.m.

Ballast : 23,316.4 cu.m.

Detail as below.

FPT : 2,222.9 cu.m.
No.1 DB WBT(C) : 1,478.4 cu.m.
No.2 DB WBT(P&S) : 2 x 1,686.4 cu.m.
No.3 DB WBT(P&S) : 2 x 1,708.6 cu.m.
No.4 DB WBT(P&S) : 2 x 1,350.8 cu.m.
No.1 TS WBT(P&S) : 2 x 551.0 cu.m.
No.2 TS WBT(P&S) : 2 x 1,436.4 cu.m.
No.3 TS WBT(P&S) : 2 x 1,441.6 cu.m.
No.4 TS WBT(P&S) : 2 x 1,436.0 cu.m.
APT : 393.6 cu.m.

Ballast pump capacity : 2 pumps x 1200 m³/hr.
Stripping eductor 100 m³/hr.

Fuel Oil : 2,017 cu.m. (96%)
Detail as below
No2 Tank : 720.3 cu.m.
No3 Tank : 720.3 cu.m.
No4 Tank : 661.0 cu.m.
Diesel Oil : 134 cu.m. (96%)

Fresh Water : 419 cu.m.
Detail as below
FW Tanks P & S : 151.6 cu.m.
151.6 cu.m.
Distilled water : 58.1 cu.m.
58.1 cu.m.

The FW and distilled water tanks are interchangeable and the vessel is set up to ensure that all drinking water fountains are only supplied from dedicated drinking water tanks.

FW production 40 cu.m./24hrs.
FW Consumption 14 cu.m. with 34 persons on board

SPECIAL FEATURES OF THE VESSEL

Ermans-Read electro hydraulic end rolling hatch covers, No.1 to No.7 hatches.

3 Macgregor-Hugglunds K-type, jib and eccentric arm, grab cranes, situated on the starboard side hatch ways between No.2-3, 4-5 and 6-7 hatches. Outreach port side 18m and outreach stb. side 28m, able to work simultaneously feeder vessels on Port side and Export vessels on the starboard side.

Daily discharge rate 15,000 MT/day with all three cranes working simultaneously.

Deck cranes fitted with computerized weighing system, with an accuracy of +/- 0.5%.

Fuel transfer system - fuel transfer pump rated at 100 MT/Hr. via a Calibrated flow meter.

Bunker manifolds, two forward and two aft 4" and 2" lines.

Helideck on f'cle, with landing capability for a Bell 212 helicopter, the fore mast can be lowered into the horizontal position for helicopter operation.

7 x 3.5m diameter Yokohama Fenders on the starboard side, and 4 x 1.5m and 3 x 2.5m diameter Yokohama fenders on the Port side.

A motor launch tender capacity 10 person for use in sheltered waters.

Front End loaders – 4 off use for cleaning holds. Bucket capacity 5 MT each.



THE CHINA NAVIGATION CO. LTD.



M.V. ERAWAN

Panamax Bulk Carrier/Silo Vessel

BUILT

1982 March (Panamax Bulk Carrier)
Namura, Imari, Japan.
Hull No. 858
2000 March, Conversion to a
Transhipper Silo Vessel at
Wenchong Shipyard, China.

CLASS

Lloyds +100AT Moored Silo Vessel at Gulf of Papua, IWS, LMC,
SCM, Strengthened for Heavy Cargoes.

IMO No.8100997

DIMENSIONS

Length O.A. : 224.97m
Length B.P. : 217.00m
Breadth Mld : 32.20m
Depth Mld : 17.80m
Draft : 12.583m
DWT : 52,800 MT with No.1 hold empty
TPC : 64 MT
GRT : 35,716
NRT : 20,830
GRT (Suez) : 36,932.81
NRT (Suez) : 34,015.38
GRT (Panama) : 37,812.00
NRT (Panama) : 29,564.00
Lightship : 12,148 MT

CALL SIGN

MVGY5

COMMUNICATIONS

Fleet 77 : 764566936/9 (Tel)
Fleet 77 : 764566938 (Fax)
Satcom C : 423212510 (Tlx)
Cell Phone : 61-145-125748
Cell phone : 61-145-225748
E-Mail : erawan@cnco.amosconnect.com
Iridium : 8816-318-16503

PORT OF REGISTRY

Douglas I.O.M.
Off No.726409

CARGO HOLD AND HATCHES

7 holds - No.1 to No.7
Hatch cover size No.1 to No.7 - 16.60m x 13.20m

CARGO CAPACITY DETAILS

Compartment	Grain cu.m.	Bale cu.m.
Hold 1	10,068.2	9564.8
2	10,520.1	9994.1
3	11,357.2	10789.3
4	10,446.2	9923.9
5	11,375.2	10789.3
6	10,554.9	10027.2
7	10,692.3	10157.7
Total	74,996.1	71246.3

Max. DWT Silo operation with No.1 hold empty = 52,800 MT (cargo
S.G. 2.5 t/m³ average) to corresponding mean draft 12.583m

SPEED AND CONSUMPTION

a) Main Engine (diesel oil) : 9.0 knots on 18mt/day

b) Ship's Generator (MDO or gas oil):

Auxiliary generator
At sea : 2.0 MT/day
At sea, ballasting or hold washing : 2.5 MT/day
In Port, idle : 1.5 MT/day
In Port, ballasting : 2.5 MT/day

Incinerator : 1.0 MT/month

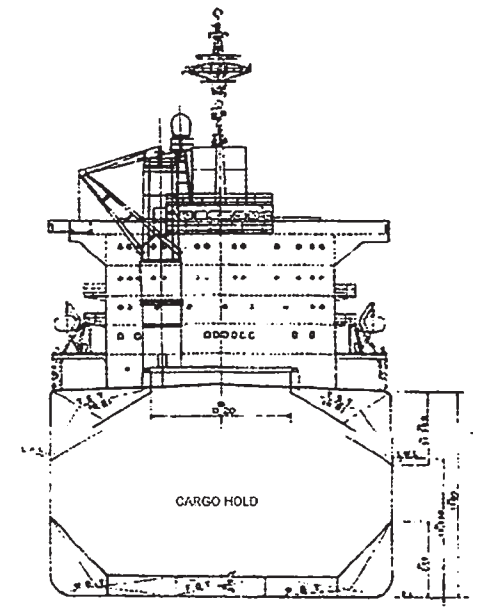
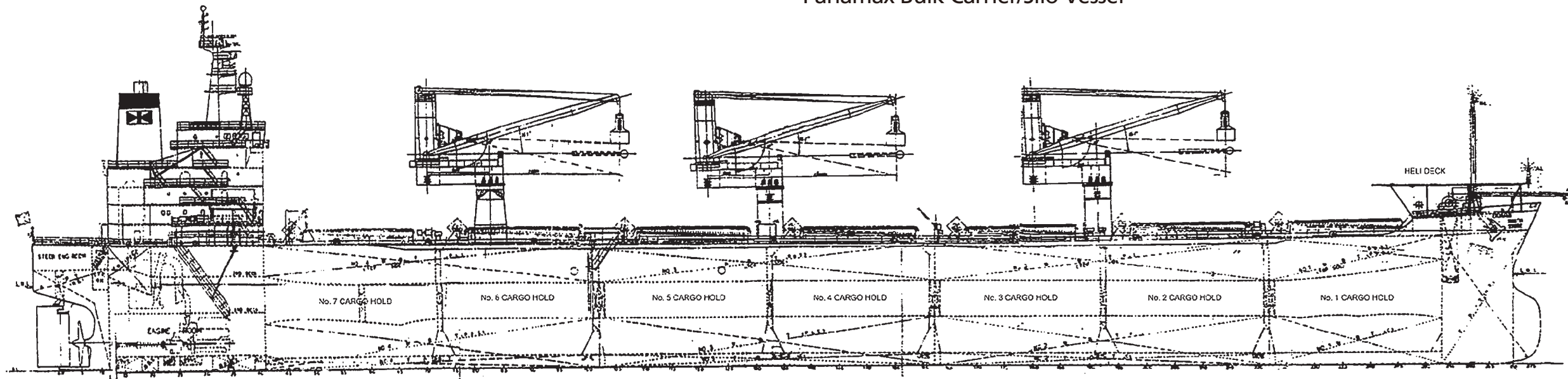
c) Boiler (currently not in use)

d) Deck crane Generator Consumption working 24hrs (gas oil)

1 Crane Working 900 Ltrs.
2 Cranes Working 1,800 Ltrs.
3 Cranes Working 2,000 Ltrs.

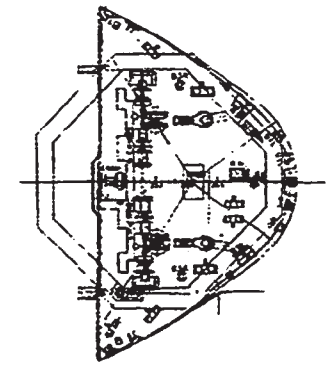
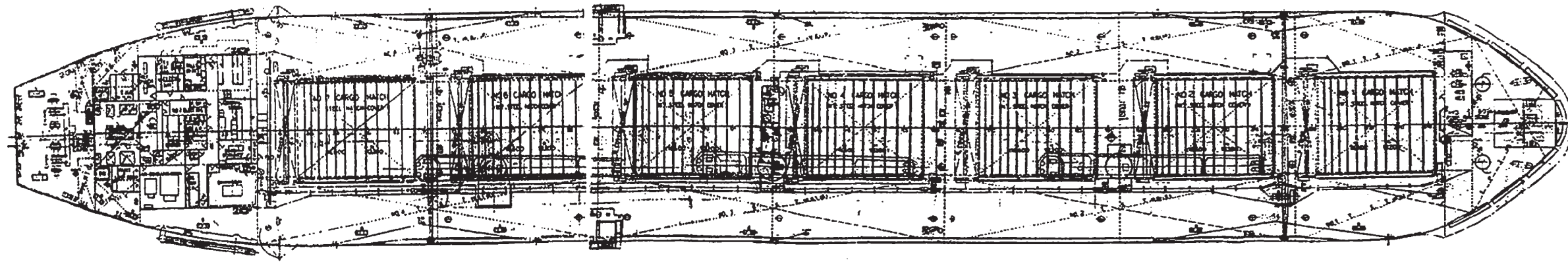
M.V. ERAWAN

Panamax Bulk Carrier/Silo Vessel

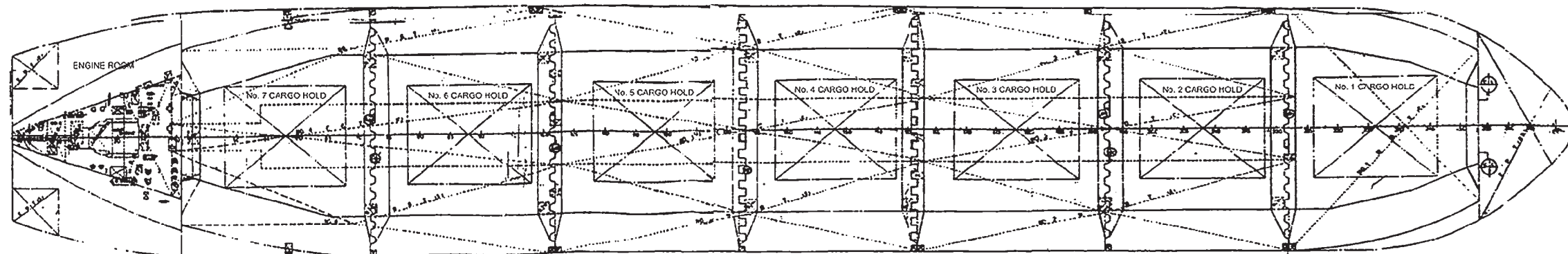


UPPER DECK

'C'LE DECK



HOLD PLAN



PRINCIPAL PARTICULARS

LENGTH	(O.A.)	224.97 M
LENGTH	(B.P.)	217.00 M
BREADTH	(MLD)	32.20 M
DEPTH	(MLD)	17.80 M
DRAFT	(SUMMER)	12.82 M
DEADWEIGHT	(SUMMER)	63,977.80 MT
GROSS TONNAGE		35,716
NET TONNAGE		20,830
MAIN ENGINE		MITSUBISHI M.A.N. 10V 52/55A
MCR		10,550 BHP @ 95 RPM
NCR		8,965 BHP @ 90 RPM
COMPLEMENT		50 P
CLASS		LR