



Swire encompasses a wide range of commercial activities and its interests span five continents. Swire's principal areas of operation are in the Asia Pacific region, and centre on the Greater China area. The Special Administrative Region of Hong Kong is home to publicly quoted Swire Pacific, whose core businesses are grouped under five operating divisions: property, aviation, beverages, marine services, and trading & industrial.

John Swire & Sons, Swire's parent company, is headquartered in London, and in addition to its 36.5% shareholding in Swire Pacific, controls a range of wholly-owned businesses, including deep-sea shipping, cold storage, road transport, and agricultural activities, with main areas of operation in Australia, Papua New Guinea, East Africa, Sri Lanka, the USA and UK. John Swire & Sons acts as overall coordinator of Swire policy, and, under various agreements, management and advisory services are provided within the group.

• YEAR ESTABLISHED

John Swire & Sons Liverpool 1816, Melbourne 1855, London 1864, Shanghai 1866, Yokohama 1867, Hong Kong 1870, New York 1874.
Cathay Pacific Hong Kong 1946.
Swire Pacific Hong Kong 1974, from an existing public company; The Taikoo Dockyard and Engineering Company of Hong Kong Limited, first quoted on the Hong Kong stock market in 1959.
James Finlay Glasgow 1750. James Finlay became a Swire group associate in 1976 and a wholly-owned subsidiary in 2000.

• EMPLOYEES

Swire group + associates More than 125,000

• 2007 PERFORMANCE

John Swire & Sons reported a profit attributable to shareholders of UK£299m for 2007 on turnover of UK£2,990m. The principal financial statistics of listed companies in the Swire group were:

Listed companies	Turnover	Profit attributable to shareholders	Shareholders' funds
Swire Pacific	HK\$21,553m	HK\$10,283m	HK\$ 153,341m
Cathay Pacific Airways	HK\$75,358m	HK\$ 7,023m	HK\$ 50,549m
Hong Kong Aircraft Engineering	HK\$ 4,619m	HK\$ 1,073m	HK\$ 4,409m
Steamships Trading Company	Kina 407m	Kina 74m	Kina 278m



JOHN SWIRE & SONS

• COLD STORAGE + FREIGHT HAULAGE

	Cold storage plants		Prime movers
	No. of locations	(million cubic feet)	
• USA:	31	158	18
• Australia:	22	67.7	122
	-	-	40
	-	-	243
• Papua New Guinea:	-	-	97
• Vietnam:	1	8	
• Sri Lanka:	1	2.2	

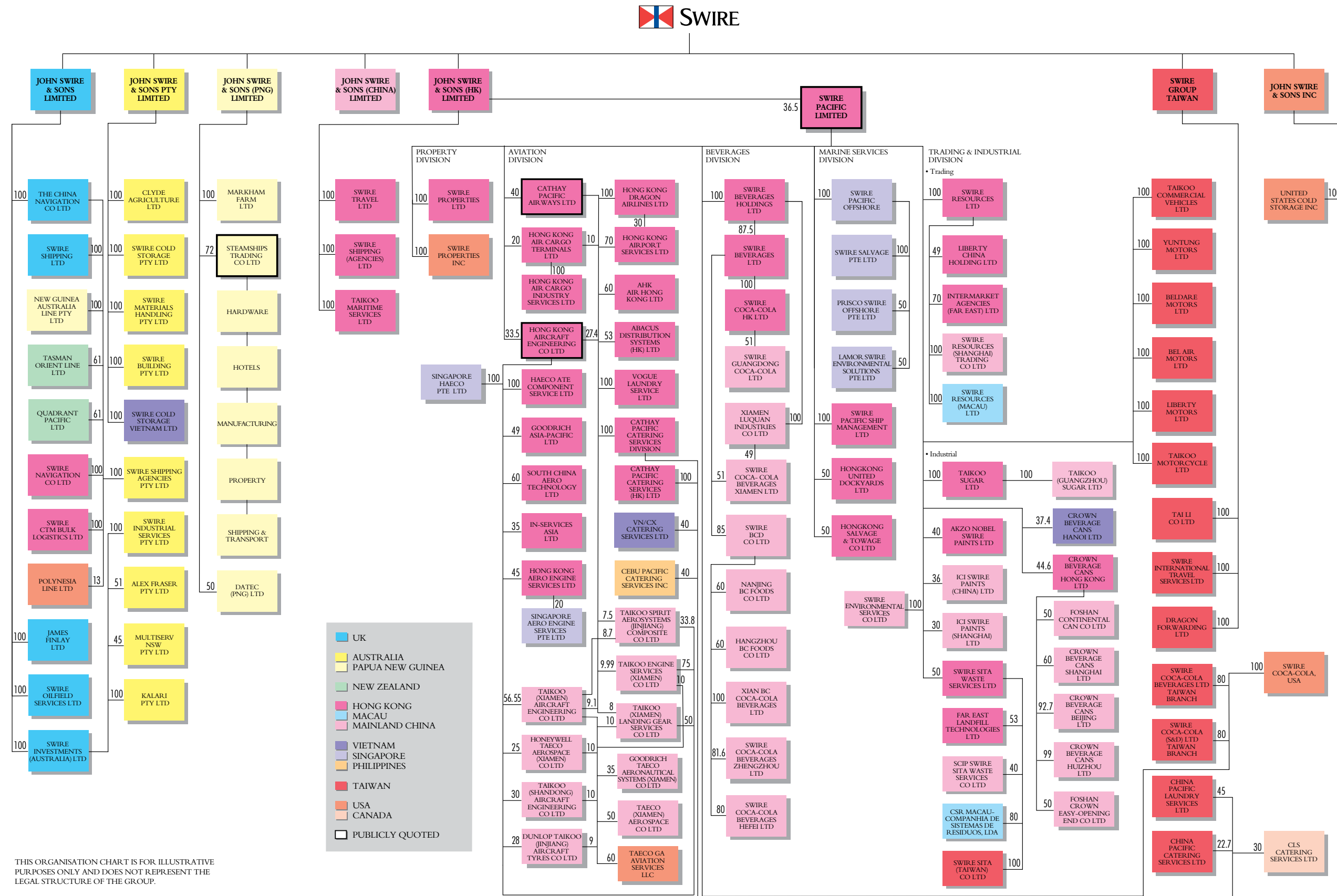
• AGRICULTURE

Clyde Agriculture	Total acreage: 1,864,000 Cattle: 36,000	Cotton: 27,000 acres Sheep: 350,000	Dryland winter crop (mainly wheat) 62,000 acres
Markham Farm	Total acreage: 16,507 acres	Cocoa and copra: 2,146 acres	Cattle: 8,000 Vanilla: 6 acres
James Finlay	Tea: 45,000 acres in Kenya, Sri Lanka, Uganda Rubber: 3,700 acres in Sri Lanka Flowers: 1,050 acres under greenhouse or polytunnel in Kenya producing 520 million stems per annum for the UK and continental European markets. Timber: 16,000 acres		

• SHIPPING + MARINE SERVICES

The China Navigation Company Limited (CNCo)
 Founded in 1872, China Navigation owns and operates ships as well as acting as the holding company for its liner shipping operations and shipping agency interests. The liner shipping services are operated by CNCo's wholly-owned subsidiary, **Swire Shipping Limited (SSL)**. SSL operates nine liner trades, including westbound and eastbound round the world services as well as others within its core trading area of the South Pacific, Asia and Australasia. CNCo also manages its part-owned associate Greater Bali Hai Service, and has a minority interest in the Polynesia Line. CNCo and its subsidiaries are represented through offices in Australia, China, Hong Kong, India, Japan, New Zealand, Singapore, United Kingdom and the United States. **Swire Navigation Company Limited (SNCo)** operates the NGPL South Pacific liner service and is involved in dry bulk chartering for capesize vessels. **Tasman Orient Line** operates four services linking New Zealand and the Pacific Islands with Asia. **Swire Shipping Agencies** has subsidiaries in Australia, Mainland China, Hong Kong, Malaysia, Marshall Islands, New Caledonia, Singapore, Solomon Islands, Tahiti, Taiwan and the United Kingdom. **Quadrant Pacific** operates shipping agency and stevedoring services

• SHAREHOLDINGS



John Swire & Sons Ltd
 Swire House
 59 Buckingham Gate
 London SW1E 6AJ
 England
 Tel: (44) 020 7834 7717
 Fax: (44) 020 7630 0380

John Swire & Sons Pty Ltd
 Level 11 Swire House
 10 Spring Street
 Sydney NSW 2000
 Australia
 Tel: (61) 02 9272 9272
 Fax: (61) 02 9231 4927

John Swire & Sons (PNG) Ltd
 c/o Steamships Trading Company Ltd
 P O Box 1
 Port Moresby
 National Capital District 121
 Papua New Guinea
 Tel: (675) 322 0280
 Fax: (675) 321 1786

John Swire & Sons (China) Ltd
 Rm. 1706, Capital Mansion
 6 Xin Yuan Nan Road
 Chao Yang District
 Beijing 100004
 China
 Tel: (86) 10 8486 3321
 Fax: (86) 10 8486 3221

John Swire & Sons (HK) Ltd
 35/F Two Pacific Place
 88 Queensway
 Hong Kong
 Tel: (852) 2840 8888
 Fax: (852) 2526 9365

John Swire & Sons Ltd
 Vietnam Representative Office
 Road No. 6, Song Than 1 Industrial Zone
 Di An Townlet, Di An District
 Binh Duong Province
 Vietnam
 Tel: (84) 650 790 015
 Fax: (84) 650 742 375

Swire Group Taiwan
 39/F, No. 7, Sec 5
 Xinyi Road
 Xinyi District, 11049
 Taipei
 Taiwan
 Tel: (886) 02 8101 5188
 Fax: (886) 02 8101 5199

John Swire & Sons, Inc
 P O Box 140
 Milford, DE 19963-0140
 USA
 Tel: (1) 302 422 7536
 Fax: (1) 302 422 8420

in New Zealand and jointly controls a shipping agency company in Fiji. **Swire CTM Bulk Logistics** is a joint venture between The China Navigation Company and CTM established in 2008 to pursue opportunities in the offshore logistics market.

- Total vessels operated: 48 (45 multipurpose liners; three bulk carriers)
 - Vessels owned: 18 (one bulk carrier; 13 multipurpose wholly-owned; four multipurpose jointly-owned with MOL)
 - Cargo volume carried by managed services in 2007: Containers: 216,179 TEUs; Break bulk: 4,347,556 revenue tonnes; Total: 8,671,136 revenue tonnes.

Swire Travel Limited

Swire Travel is one of Hong Kong's leading business and leisure travel specialists. Associate companies operate in Mainland China and Taiwan.

Swire Oilfield Services Limited

• Services to the international oil and gas industry, including container/tank and pump rental and chemical/aviation fuel storage and distribution.

- Fleet comprises some 40,000 cargo-carrying units.

John Swire & Sons (PNG) Limited

• **Steamships Trading Company**, 72% subsidiary shareholding – trading, marine, property, hotel, manufacturing, logistics and freight haulage interests in Papua New Guinea.

- Markham Farm Limited**, cocoa and copra plantation and cattle farm.

✠ SWIRE PACIFIC

• P R O P E R T Y

Swire Properties Limited

- Valuation of investment properties completed and under development at December 2007: HK\$128,109 million (US\$16,424 million)
- Gross rental income from completed investment properties in 2007: HK\$5,551 million (US\$712 million).

Gross floor areas (in million sq. ft.):	Hong Kong	Mainland China	USA	UK
Completed properties held for investment				
Commercial	10.5	–	–	–
Techno-centres	1.8	–	–	–
Residential	0.5	–	–	–
Hotels	0.3	–	0.3	0.2
Properties under development				
Investment properties (mainly commercial)	2.4	7.9	–	–
Properties for sale (mainly residential)	0.5	–	1.2	–

- The table includes floor areas of properties held by subsidiaries, associated and jointly controlled companies on an attributable basis.

• A V I A T I O N

Cathay Pacific Airways Limited

• Fleet: 117

- Aircraft in service: 117
- Fleet composition: 12 Boeing 777-300s, eight 777-300ER (Extended Range), five 777-200s, 24 747-400s, six 747-400 BCF (Boeing Converted Freighter), six 747-400 freighters, one 747-300 ER freighter, six 747-200 freighters, three Airbus A340-600s, 15 A340-300s and 31 A330-300s
- On firm order: 46, including 22 Boeing 777-300 ER, two 747-400 BCF, six 747-400 ER freighters, 10 747-D freighters and seven A330-300s
- Destinations served: 119 cities in 37 countries and territories (including code-share destinations).

Hong Kong Dragon Airlines Limited (Dragonair)

• Aircraft in service: 39

- Fleet composition: 16 Airbus A330s, six A321s, 10 A320s, two Boeing 747-300 freighters, one 747-200 freighter, four 747-400 Boeing Converted Freighters
- On firm order: One 747-400 BCF (2008) and two A320s (lease)
- Destinations served - 32 destinations, including 20 cities in Mainland China, and four freighter destinations.

Cathay Pacific and Dragonair:

• 2007 passengers carried: 23.25 million

- 2007 kilometres flown: 422 million
- 2007 cargo carried: 1.64 million tonnes
- 2007 mail carried: 30,156 tonnes.

AHK Air Hong Kong Limited

• All-cargo airline

- Aircraft in service: 11. Fleet (all freighters): eight owned Airbus A300-600F and three aircraft under wet-lease (two Boeing 727-247Fs and one A300B4-200F)
- Destinations served: 12 Asian cities.

Hong Kong Aircraft Engineering Company Limited (HAECO)

• The only full service provider at Hong Kong International Airport offering comprehensive line to heavy maintenance packages including aircraft component overhaul support and AOG/aircraft recovery service.Two fully equipped hangars provide eight maintenance bays for a combination of wide- and narrow-bodied aircraft; HAECO plans to add two more hangars by 2015

- Airframe heavy checks, major structural and avionics modifications, refurbishment, and painting on Boeing 747, 757, 767, 777, and Airbus 320, 330, 340 families. Boeing 747-400 combi to Special Freighter conversions
- Line maintenance service provides 24/7 maintenance operation to around 70 airlines/operators, processing 90,000 plus flights annually, and offers maintenance services up to and including full technical log certification and aircraft release, as well as a comprehensive package of ramp handling services
- Component & Avionics facility has extensive repair/overhaul capabilities on a wide range of mechanical and avionics components fitted on Boeing and Airbus aircraft models
- Fleet Technical Management (FTM) and Inventory Technical Management (TM) offer comprehensive total support packages that provide cost-effective, customised engineering and maintenance solutions
- Holds approvals from HKCAD, USA FAA, European Union EASA and 26 other regulatory authorities.

Principal subsidiary and jointly controlled companies are:

• **Taikoo (Xiamen) Aircraft Engineering Co. Ltd (TAECO)** – full equipped with five double-bay Boeing 747-size hangars, with the sixth one planned for operation by mid-2009. Provides heavy maintenance on Boeing and Airbus aircraft, passenger/combi to freighter conversion programmes on Boeing 747-200/300/400, and Boeing 737-300/400 models.TAECO also provides line maintenance in Beijing, Shanghai and Xiamen.

• **Taikoo (Shandong) Aircraft Engineering Co. Ltd (STAECO)** – four hangars can accommodate seven Boeing 737/A320 series simultaneously. Provides line and heavy maintenance and modifications on narrow body/regional aircraft including Boeing 737, SAAB340 and Bombardier CRJ200/700, and passenger to freighter conversions on Boeing 737-300/400 aircraft.

• **Hong Kong Aero Engine Services Ltd (HAESL)** – an overhaul facility equipped with 130,000 lbs thrust Engine Test Cell to service RB211 and Trent 500/700/800 series engines.

Cathay Pacific Catering Services

Kitchens:

- Hong Kong
- Ho Chi Minh City
- Cebu
- Vancouver
- Toronto
- Taipei
- Total

Meals per day:

- 58,000
- 13,200
- 1,500
- 10,700
- 9,100
- 28,000
- 120,500

Hong Kong Airport Services Limited (HAS)

- Licensed ramp handling services at Hong Kong International Airport
 - 38 airline customers
 - Provision of crew transportation services
- Handled a total of 80,586 flights in 2007.

Hong Kong Air Cargo Terminals Limited (Hactl)

• Leading air cargo terminal operator, handling over 70% of all air cargo at Hong Kong International Airport

- Services include physical cargo handling, freighter ramp handling, air cargo document handling and logistics support services
- Operates SuperTerminal 1, the world's largest single air cargo terminal, with a potential handling capacity of 3.5 million tonnes per annum
- Serves over 90 international airlines and over 1,000 freight forwarding companies
- Achieved record annual tonnage throughput of 2.63 million tonnes in 2007
- 100% shareholding in Hong Kong Air Cargo Industry Services Limited (Hacis), which offers intermodal services connecting Hong Kong and Mainland China. Superlink China Direct provides customs bonded trucking services between Hong Kong International Airport and six Inland Cargo Depots located in Guangdong and Fujian Province in Mainland China.

Vogue Laundry Service Limited

• Asia's largest single-site laundry with a daily capacity of 120 tonnes and daily output of 96.5 tonnes

- Operates one plant and 21 retail outlets in Hong Kong, employing over 600 staff
- Is a member of the Drycleaning & Laundry Institute International and Textile Rental Services Association of America, with ISO 9001, ISO 14001, OHSAS 18001 accreditation
- Serves both corporate and retail customers, with a 70% market share of the airline business and 30% share of the hotel business in Hong Kong.

• B E V E R A G E S

• 2007 sparkling and still drink sales: 687 million eight-ounce unit cases

- Nine Coca-Cola production facilities in Mainland China, one in Hong Kong, and two each in Taiwan and the USA
- Coca-Cola franchise territory covering Hong Kong,Taiwan, seven provinces in Mainland China and parts of 11 states in the USA
- Franchise territory includes 427 sales offices: 384 in Mainland China, one in Hong Kong, 15 in Taiwan and 27 in the USA
- Total franchise population estimated to be 441 million
- Leading brands produced: Coca-Cola, Coke Zero,Vanilla Coke, Coke Light, Sprite, Fanta, Smart, Schweppes, Nestea, Nescafe, Powerade, Qoo, Minute Maid, Original Leaf, Hi-C, Healthworks, Bonaqua, Ten Ren, Dr Pepper, Dasani, Tian Yu Di and Sensation.

• M A R I N E S E R V I C E S

Swire Pacific Offshore (SPO)

Is a provider of offshore marine support services to the international oil and gas industry, operating a fleet of 71 vessels (70 wholly-owned, one on bare boat charter), including Anchor Handling Tug Supply Vessels (AHTS), Anchor Handling Tugs (AHT), Platform Supply Vessels (PSV), Ice-breaking Supply Vessels (IBSV), Seismic Survey Vessels, ROV/Dive Support Vessels, and Maintenance/Utility Vessels.The company has an order book of 16 vessels and two accommodation work barges delivering 2009-2012 and operates worldwide except North America.The recently formed Seismic Survey division operates three seismic survey vessels on term charter to major geophysical clients.
Swire Production Solutions designs, builds and operates production systems for the offshore oil and gas industry.These include Floating Production Storage Offloading vessels (FPSOs) based on converted tankers for long-term field development, Mobile Production Units (MOPUs) using jack up rigs, and Floating Production Units (FPUs), based on offshore support vessels, for temporary production, marginal field appraisal and extended well tests.
Swire Salvage: professional salvors with specialist equipment depots strategically located in Singapore, Dubai and West Africa. Emergency response services include salvage, ocean towage, re-floating of vessels, wreck removal, oil spill cleanup, fire-fighting and diving services.
Lamor Swire Environmental Solutions (LSES), based in the United Arab Emirates, provides effective and rapid cleanup of offshore oil spills and other environmental disasters on a global basis through a network of dedicated Response Centres. LSES also provides in-house training and turnkey solutions for a wide range of clients covering all areas of environmental disaster exposure.

HUD Group

• Provides ship repair and land engineering services, with a modern floating dock of 40,000 tonnes lifting capacity

- Designs, owns and operates (as **Hongkong Salvage & Towing**) a fleet of 15 tugs with a combined 55,200 BHP and average age of seven years in Hong Kong and the Middle East.

• T R A D I N G & I N D U S T R I A L

Trading

Taikoo Motors Group imports vehicles and operates dealerships in Taiwan.The group sold 9,989 vehicles in 2007.
Taikoo Commercial Vehicles Limited is the exclusive distributor of Volvo trucks and buses.
Beldare Motors Limited is the exclusive distributor of Volkswagen cars and **Bel Air Motors Limited** is the exclusive distributor of Volkswagen light commercial vehicles.
Yuntung Motors Limited is the sole distributor of Kia cars.
Liberty Motors Limited is the exclusive distributor of Audi cars and **Taikoo Motorcycle Limited** is the sole distributor of Harley-Davidson Motorcycles.
Swire Resources Group is the leading marketer, wholesaler and retailer of athletic and leisure footwear, apparel and accessories in Hong Kong and Macau, where it is the exclusive distributor of the following international brands: Aerosoles, Arena, Champion, Columbia, Puma, Rockport, Skechers, Speedo, Surf-Siders and Teva. In Mainland China it is the exclusive distributor of Puma, Columbia and Rockport footwear and apparel.
Liberty China Holding Limited, a joint venture with PUMA AG, manages the marketing and distribution of PUMA footwear, apparel and accessories.
Intermarket Agencies (Far East) Limited, a joint venture with the Pentland Group, distributes Speedo swimwear.The group owns and operates three multi-brand retail chains in Hong Kong:
Marathon Sports, the largest sports retail chain in Hong Kong,
GigaSports mega sports concept stores and **Catalog** which sells casual footwear, apparel and accessories. In total, the goup manages 121 mixed and single-brand retail outlets in Hong Kong and Macau and 92 single-brand stores in Mainland China.The group sold 3.8 million pairs of shoes in 2007.

Industrial

Swire SITA Waste Services Limited processed 4.7 million tonnes of waste in Hong Kong, Macau and Taiwan in 2007.
ICI Swire Paints sold 133.9 million litres of paint in Hong Kong and Mainland China in 2007.
CROWN Beverage Cans Hong Kong Limited and **CROWN Beverage Cans Hanoi Limited** produced some 3,042 million cans and 2,996 million ends in 2007 in Foshan, Shanghai, Beijing, Huizhou and Hanoi.
Taikoo Sugar Limited sold 107 million lbs of sugar in 2007.

2008 marks:

• 140 years since John Swire & Sons established its Head Office in London

- 135 years since the first China Navigation vessel went into service on the Yangtze River
- 60 years since Swire acquired a majority shareholding in Cathay Pacific Airways
- 30 years since Swire Pacific Offshore became a wholly-owned subsidiary
- 20 years since Swire acquired the Marathon Sports chain.

Swire's Chinese name is Taikoo (太古) meaning “Great and Ancient” and our motto is “Esse Quam Videri” meaning “To be, rather than to seem to be.”



FAST FACTS 2008



All results refer to financial year 2007. Other data effective end July 2008.